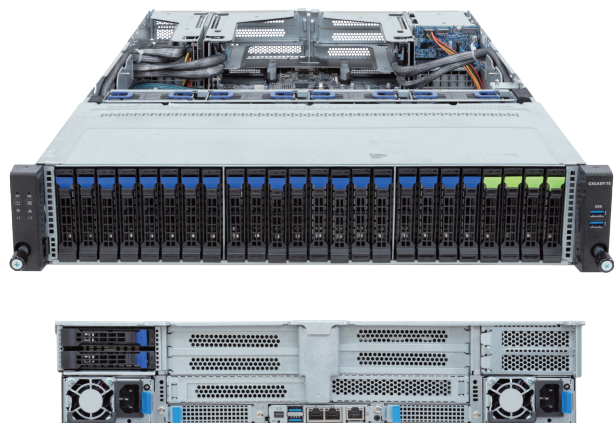


R283-S92-AAJ4

Rack Server - 2U DP 24+2-Bay Gen4 NVMe/SATA



Features

- Dual 5th/4th Gen Intel® Xeon® Scalable Processors
- Dual Intel® Xeon® CPU Max Series
- 8-Channel DDR5 RDIMM, 32 x DIMMs
- Dual ROM Architecture supported
- 2 x 1Gb/s LAN ports via Intel® I350-AM2
- 4 x 2.5" Gen4 NVMe/SATA/SAS hot-swappable bays
- 20 x 2.5" SATA/SAS hot-swappable bays
- 2 x 2.5" SATA/SAS hot-swappable bays on the rear side
- Onboard 12Gb/s SAS expander
- 6 x FHHL PCIe Gen5 x16 slots
- 2 x LP PCIe Gen5 x8 slots
- 2 x OCP 3.0 Gen5 x16 slots
- 1+1 2000W 80 PLUS Titanium redundant power supplies

Specification

Dimensions	2U (W438 x H87.5 x D815 mm)	I/O Ports	Front: 2 x USB 3.2 Gen1 Rear: 2 x USB 3.2 Gen1, 1 x Mini-DP, 2 x RJ45, 1 x MLAN Internal: 1 x TPM header, 1 x VROC connector
Motherboard	MS93-FS0	Backplane Board	Front - CBP2007: PCIe Gen4 x4 or SATA 6Gb/s or SAS 12Gb/s Rear - CBP2022: SATA 6Gb/s or SAS 12Gb/s
CPU	5th Generation Intel® Xeon® Scalable Processors 4th Generation Intel® Xeon® Scalable Processors Intel® Xeon® CPU Max Series Dual processor, TDP up to 350W	Power Supply	1+1 2000W 80 PLUS Titanium redundant power supplies AC Input: 100-240V
Socket	2 x LGA 4677 (Socket E)	System Management	ASPEED® AST2600 management controller GIGABYTE Management Console (AMI MegaRAC SP-X)
Chipset	Intel® C741 Chipset	OS Compatibility	Windows Server 2019 / 2022 RHEL 8.6 / 8.7 / 8.8 / 8.9 / 8.10 / 9.0 / 9.1 / 9.2 / 9.3 / 9.4 SLES 15 SP4 / SP5 / SP6 Ubuntu 22.04 / 22.04.1 / 22.04.2 / 22.04.3 / 22.04.4 / 24.04 LTS VMware ESXi 7.0 Update 3a / 8.0 Update 1, Update 2, Update 3 Citrix Hypervisor 8.2 LTSR CU1
Memory	32 x DIMM slots, 8-Channel DDR5 memory RDIMM up to 96GB supported 3DS RDIMM up to 256GB supported Memory speed: Up to 5600 MT/s (1DPC), 4400 MT/s (2DPC)	System Fans	4 x 80x80x38mm (18,300rpm)
LAN	2 x 1Gb/s LAN ports (1 x Intel® I350-AM2) - Supported NCSI 1 x 10/100/1000 management LAN	Operating Properties	Operating temperature: 10°C to 35°C Operating humidity: 8-80% (non-condensing) Non-operating temperature: -40°C to 60°C Non-operating humidity: 20%-95% (non-condensing)
Video	ASPEED® AST2600 Integrated 2D Graphic Adapter	Packaging Content	1 x R283-S92-AAJ4, 2 x CPU heatsinks, 6 x Carrier clips, 1 x Mini-DP to D-Sub cable, 1 x -Section Rail kit Packaging Dimensions: 1077 x 679 x 300 mm
Storage	4 x 2.5" Gen4 NVMe/SATA/SAS hot-swappable bays 20 x 2.5" SATA/SAS hot-swappable bays 2 x 2.5" SATA/SAS hot-swappable bays on the rear side Broadcom SAS35x36R expander SAS card is required to enable SATA/SAS drives All devices are connected to SAS expander.	Part Numbers	Barebone package (5th/4th Gen): 6NR283S92DR000ABJ4* Barebone package (4th Gen): 6NR283S92DR000AAJ4* - 2-Section Rail kit (CMA not supported): 25HB2-3A0206-K0R - CPU heatsink: 25ST1-323208-A0R - Mini-DP to D-Sub cable: 25CRN-200801-K1R - Power supply: 25EP0-22000J-G1S
RAID	Intel® SATA RAID 0/1/10/5		
Expansion Slots	6 x PCIe Gen5 x16 FHHL slots 2 x PCIe Gen5 x8 LP slots 2 x OCP 3.0 Gen5 x16 slots - Supporte NCSI function		
TPM	1 x TPM header with SPI interface (Optional TPM2.0 kit: CTM010)		



Learn more at <https://www.GIGABYTE.com/enterprise>

* All specifications are subject to change without notice. Please visit our website for the latest information.
* Intel, the Intel logo, Xeon, and other Intel marks are trademarks of Intel Corporation or its subsidiaries.
* All other brands, logos and names are property of their respective owners.

© 2024 Giga Computing Technology Co., Ltd. All rights reserved.

Designed by

