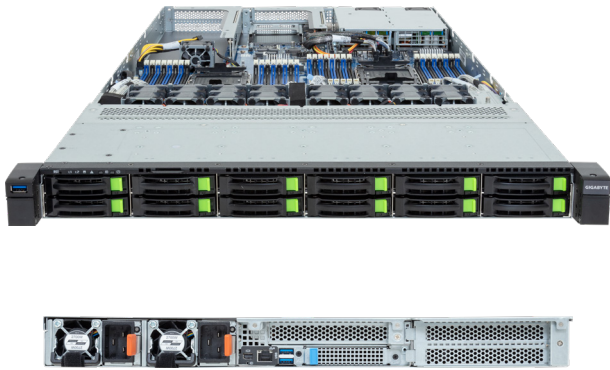


# R184-SF1-AAJ1

Rack Server - 1U DP 1 x PCIe Gen5 GPU



## Key Features

- Supports 1 x Dual-slot Gen5 GPU card
- Dual Intel® Xeon® 6 Processors, LGA 4710
- 8-Channel DDR5 RDIMM / MCR DIMM, 32 x DIMMs
- Dual ROM Architecture
- 12 x 2.5" Gen5 NVMe/SATA/SAS-4 hot-swappable bays
- 1 x M.2 slot with PCIe Gen5 x4 interface
- 1 x FHFL PCIe Gen5 x16 slot for GPUs
- 1 x FHFL PCIe Gen5 x16 slot
- 1 x FHHL PCIe Gen5 x16 slot
- 1 x OCP 3.0 Gen5 x16 slot
- Dual 2000W 80 PLUS Titanium redundant power supply

## Application

AI, AI Inference, AI Training, Visual Computing, High-Performance Computing, Networking, Hybrid/Private Cloud Server...

## Specification

<b>Dimensions</b>	1U (W438 x H43.5 x D815 mm)	<b>Video</b>	ASPEED® AST2600 Integrated 2D Graphic Adapter
<b>Motherboard</b>	MSF4-GP0	<b>Backplane Board</b>	PCIe Gen5 x4 or SATA 6Gb/s or SAS-4 24Gb/s
<b>CPU</b>	Intel® Xeon® 6 Processors - Intel® Xeon® 6700E-Series Processors - Intel® Xeon® 6700P-Series Processors - Intel® Xeon® 6500P-Series Processors Dual processors, TDP up to 350W	<b>Security Modules</b>	1 x TPM header with SPI interface - Optional TPM2.0 kit: CTM012 1 x PRoT module connector (M.2 M-key) - Optional PRoT module (AST1060 solution): CSC1200
<b>Sock</b>	2 x LGA 4710 (Socket E2)	<b>Power Supply</b>	Dual 2000W 80 PLUS Titanium redundant power supply AC Input: 100-240V
<b>Chipset</b>	System on Chip	<b>System Management</b>	ASPEED® AST2600 management controller GIGABYTE Management Console (AMI MegaRAC SP-X)
<b>Memory</b>	8-Channel DDR5 RDIMM / MCR DIMM, 32 x DIMM slots RDIMM: Up to 6400 MT/s (1DPC), 5200 MT/s (2DPC) MCR DIMM: Up to 8000 MT/s (*MCR DIMMs are only supported with Intel Xeon 6 Processors with P-cores and in a 1DPC configuration.)	<b>System Fans</b>	1 x 40x40x28mm (34,000rpm), 8 x 40x40x56mm (32,000rpm)
<b>LAN</b>	1 x 10/100/1000 Mbps Management LAN	<b>Operating Properties</b>	Operating temperature: 10°C to 35°C Operating humidity: 8%-80% (non-condensing) Non-operating temperature: -40°C to 60°C Non-operating humidity: 20%-95% (non-condensing)
<b>Storage</b>	12 x 2.5" Gen5 NVMe/SATA/SAS-4* hot-swappable bays *Storage card is required to support SATA and SAS drives.	<b>Packaging Content</b>	1 x R184-SF1-AAJ1 2 x CPU heatsinks 1 x Mini-DP to D-Sub cable 1 x GPU power cable (12VHPWR, 100mm) 4 x Carriers 1 x 2-Section Rail kit
<b>RAID</b>	Require RAID add-in cards	<b>Part Numbers</b>	Barebone package: 6NR184SF1DR000AAJ1* - 2-Section Rail kit (CMA not supported): 25HB2-3A0206-K0R - CPU heatsink: 25ST1-4Z3200-S7R - Mini-DP to D-Sub cable: 25CRN-200801-K1R - GPU power cable (12VHPWR, 100mm): 25CRI-1001C0-Y4R - Power supply: 25EP0-22000J-G1S
<b>Expansion Slots</b>	1 x FHFL PCIe Gen5 x16 slot for GPUs 1 x FHFL PCIe Gen5 x16 slot (blocked when Dual slot GPU is installed) 1 x FHHL PCIe Gen5 x16 slot  1 x OCP 3.0 Gen5 x16 slot (supports NCSI function) 1 x M.2 slot (M-key, PCIe Gen5 x4, support 2280/22110 cards)		
<b>I/O Ports</b>	Front: 1 x USB 3.2 Gen1 Rear: 2 x USB 3.2 Gen1, 1 x Mini-DP, 1 x MLAN Internal: 1 x TPM header, 1 x PRoT connector, 1 x VROC connector		



Learn more about GIGABYTE server at <https://www.gigabyte.com/Enterprise>

- \* All specifications are subject to change without notice. Please visit our website for the latest information.
- \* Intel, the Intel logo, Xeon, and other Intel marks are trademarks of Intel Corporation or its subsidiaries.
- \* All other brands, logos and names are property of their respective owners.

© 2024 Giga Computing Technology Co., Ltd. All rights reserved.

Designed by

