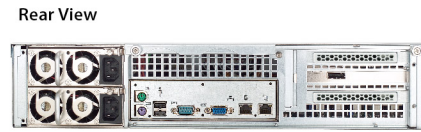


# RM232

2U 12-Bay High Storage Density Server Chassis



Optional 6Gb/s SATA backplane



Mini front switch LED display



Screwless 3x middle 80mm PWM hot-swap fans



Optional 6Gb/s Mini-SAS backplane



SAS expander backplane



Easy-assembly fan bar with anti-vibration rubbers

## Features & Benefits

- Support M/B up to 12"x13"
- Support 6Gb/s Mini-SAS backplane with or without Expander
- Built-in 3x 80mm Hot-swap middle fans
- Fan bar with anti-vibration mechanism
- Support 3-slot and 7-slot LP rear windows
- Support 2U Single and 1+1 Redundant PSU

## Specification

<b>Model Name</b>	• RM23212
<b>M/B Form Factor</b>	• Extended ATX(12"x13")
<b>Dimension (D×W×H)</b>	• 660x 430x 88(mm), 26"x16.9"x3.5"
<b>Drive Bay</b>	• Exposed:12x3.5" Hot-swap HDD
<b>PSU Form Factor</b>	• 2U Single or 1+1 Redundant
<b>Indicator</b>	• 1x Power Status, 1x Event Warning
<b>Front Control</b>	• Power On/Off
<b>System Security</b>	• Intrusion Switch
<b>Cooling Fan</b>	• Middle: 3x80mm (T=38mm), PWM, Hot-swap • Rear: 2x40mm (Option)
<b>Slot Opening</b>	• 3x Full Height&Length or 7x Low Profile
<b>HDD Backplane</b>	• 6Gb/s SATA, mini-SAS or Expander on-board
<b>Metal Thickness</b>	• 1.2mm
<b>Net Weight (chassis only)</b>	• 11.1 Kg
<b>Gross Weight (w/Packing)</b>	• 15.0 Kg
<b>Front Bezel</b>	• Option
<b>Cubic Feet</b>	• 4.26
<b>Container Info.(Single Packing)</b>	• 20': 250, 40':520, 40'H:575

## Optional Items

	Order Code	Description
<b>Expander Card</b>	◆ <b>Note1.</b>	2.5" or 3.5"HDD Storage Kits
<b>Bracket</b>	84H323210-017	UEK, for M/B I/O opening, w/ Power Control board
	84H321410-018	For C2W-5820V/5620V
<b>PCB</b>	84H331410-025	Chassis Management Board
<b>Backplane</b>	84H323210-026	12-Port(3xPCB) 6Gb/s mini-SAS, w/ Bracket (Page.77)
	84H323210-024	12-Port(1xPCB) mini-SAS, Expander onboard, w/ Bracket
<b>Cable</b>	26H113215-030	SFF-8087 to SFF-8087, 600mm
<b>Slide Rail</b>	84H321710-041	26", Ball Bearing, Tool-less (Page.78/79)
<b>Fan</b>	84H321710-010	40mm, 3P3C, L300mm, w/screws
<b>Riser Card</b>	80H09323201B0	2U 2-Slot, 1x PCI-e 16x+ 1x PCI-X w/100mm cable link
	80H09323202B0	2U 2-Slot, 1x PCI-e 16x+ 1x PCI-X (Dummy)(Page.76)
◆ <b>Note1.</b> CK12803 / CK12804 (Page.67) / CK22803 / CK22804 (Page.68)		
※ PSU ※ M/B Support ※ I/O Gasket ※ Air Duct ※ (Please refer above of information from CHENBRO web)		

## Order Information

Order Code	M/B	Backplane	Cooling Fan(mm)	PCI Slot	PSU	Slide Rail
RM23212	12"x13"	Option	3x8038	3x FF	Option	Option
RM23212M-L	12"x13"	Mini-SAS	3x8038	7x LP	Option	Option
RM23212M2-L	12"x13"	6Gb/s Mini-SAS	3x8038	7x LP	Option	Option

# RM234

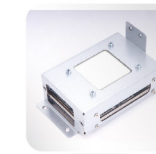
2U Modular 2.5" HDD Storage Server Chassis



Optional cage for 4 x 2.5" HDDs + slim ODD or SK51102



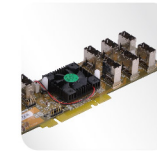
Easy-assembly fan bar with anti-vibration rubbers



Optional cage for 2 x Internal 2.5" HDDs



Optional cage for ODD + FDD or storage kits



Optional SAS expander board



Optional CMB board for PWM fan, overheat & PSU alert functions

## Features & Benefits

- Support M/B up to 12"x13"
- Modular 4-bay and 12-bay 2.5" HDD cages with 6Gb/s mini-SAS BP
- Versatile 2.5" drives configurations- 12, 16 and 24 bays via module
- Built-in 3x 80mm Hot-swap middle fans
- Fan bar with anti-vibration mechanism
- Support 2U Single and 1+1 Redundant PSU

## Specification

<b>Model Name</b>	• RM23424
<b>M/B Form Factor</b>	• Extended ATX(12"x13")
<b>Dimension (D×W×H)</b>	• 660x 430x 88(mm), 26"x16.9"x3.5"
<b>Drive Bay</b>	• Exposed:12, 16 or 24x2.5" Hot-swap HDD
<b>PSU Form Factor</b>	• 2U Single or 1+1 Redundant
<b>Indicator</b>	• 1x Power Status, 1x Fan Failure& Overheat (Option)
<b>Front Control</b>	• Power On/Off, System Reset; Option: 1xUSB2.0,Alarm Mute
<b>System Security</b>	• Intrusion Switch
<b>Cooling Fan</b>	• Middle: 3x80mm (T=38mm), PWM, Hot-swap • Rear: 2x40mm (Option)
<b>Slot Opening</b>	• 3x Full Height&Length or 7x Low Profile
<b>HDD Backplane</b>	• 6Gb/s mini-SAS
<b>Metal Thickness</b>	• 1.2mm
<b>Net Weight (chassis only)</b>	• 10.3 Kg
<b>Gross Weight (w/Packing)</b>	• 14.2 Kg
<b>Front Bezel</b>	• Option
<b>Cubic Feet</b>	• 4.26
<b>Container Info.(Single Packing)</b>	• 20': 250, 40':520, 40'H:575

## Order Information

Order Code	M/B	Backplane	Cooling Fan(mm)	PCI Slot	PSU	Slide Rail
RM23412M-L	12"x13"	Mini-SAS	3x8038	7x LP	Option	Option
RM23412M2-L	12"x13"	6Gb/s Mini-SAS	3x8038	7x LP	Option	Option
RM23424M2-L	12"x13"	6Gb/s Mini-SAS	3x8038	7x LP	Option	Option

## Optional Items

	Order Code	Description
<b>Expander Card</b>	◆ <b>Note1.</b>	3G or 6G SAS Expander Card
<b>Bracket</b>	84H323210-017	UEK, for M/B I/O opening, w/ Power Control board
	84H321410-018	For C2W-5820V/5620V
<b>PCB</b>	84H331410-025	Chassis Management Board
<b>HDD Cage</b>	84H323410-013	12-Bay for 2.5" HDD, 6Gb/s mini-SAS Backplane (Page.73)
	84H323410-014	4-Bay for 2.5" HDD, 6Gb/s mini-SAS, w/Slim ODD Bay& 2xUSB
<b>Drive Cage</b>	84H323410-006	1x 5.25" & 1x 3.5", w/2x USB2.0
<b>Slide Rail</b>	84H321710-041	26", Ball Bearing, Tool-less (Page.78/79)
<b>Cable</b>	26H113215-030	SFF-8087 to SFF-8087, 600mm
	26H113215-028	SFF-8087 to SFF-8087, 350mm
	26H113215-027	SFF-8087 to SFF-8087, 200mm
<b>Riser Card</b>	80H09323201B0	2U 2-Slot, 1x PCI-e 16x+ 1x PCI-X w/100mm cable link (Page.76)
	80H09323202B0	2U 2-Slot, 1x PCI-e 16x+ 1x PCI-X (Dummy)
◆ <b>Note1.</b> CK12803 / CK12804 (Page.67) / CK22803 / CK22804 (Page.68)		
※ PSU ※ M/B Support ※ I/O Gasket ※ Air Duct ※ (Please refer above of information from CHENBRO web)		

※ PSU ※ M/B Support ※ I/O Gasket ※ Air Duct ※ (Please refer above of information from CHENBRO web)