

Supermicro

Server Technology Leader
&
Total Solution Provider



Note on the confidentiality of this presentation

Please note that this presentation is intended to be used only by the person who will receive it. So the usage of this presentation is strictly personal and it is not for any other purpose either internal or external

Supermicro = Application Optimized Server Company



Global Footprint:

> 70 Countries

Turnover:

~ 1,6B\$ (FY 2014)

NASDAQ:

Public since 2007 (SMCI)

Years Profitable:

20.7 Years

Production:

USA, Asia and EMEA

#1 THE GREEN 500™



FatTwin



TwinPro



SuperBlade



GPU / Xeon Phi



MicroCloud



MicroBlade



Storage



Embedded



Switch



Software



Complete Rack Solutions

Strong Investments in Corporate Expansions

TAIWAN



- Total 2M sq. ft.
- Fully operational in 1 Year
- Production and R&D

SAN JOSE – CA - USA



- 36 Acres Property
- In the heart of Silicon Valley
- Total 2M sq. ft.
- Production and R&D



FatTwin



TwinPro



SuperBlade



GPU / Xeon Phi



MicroCloud



MicroBlade



Storage



Embedded



Switch

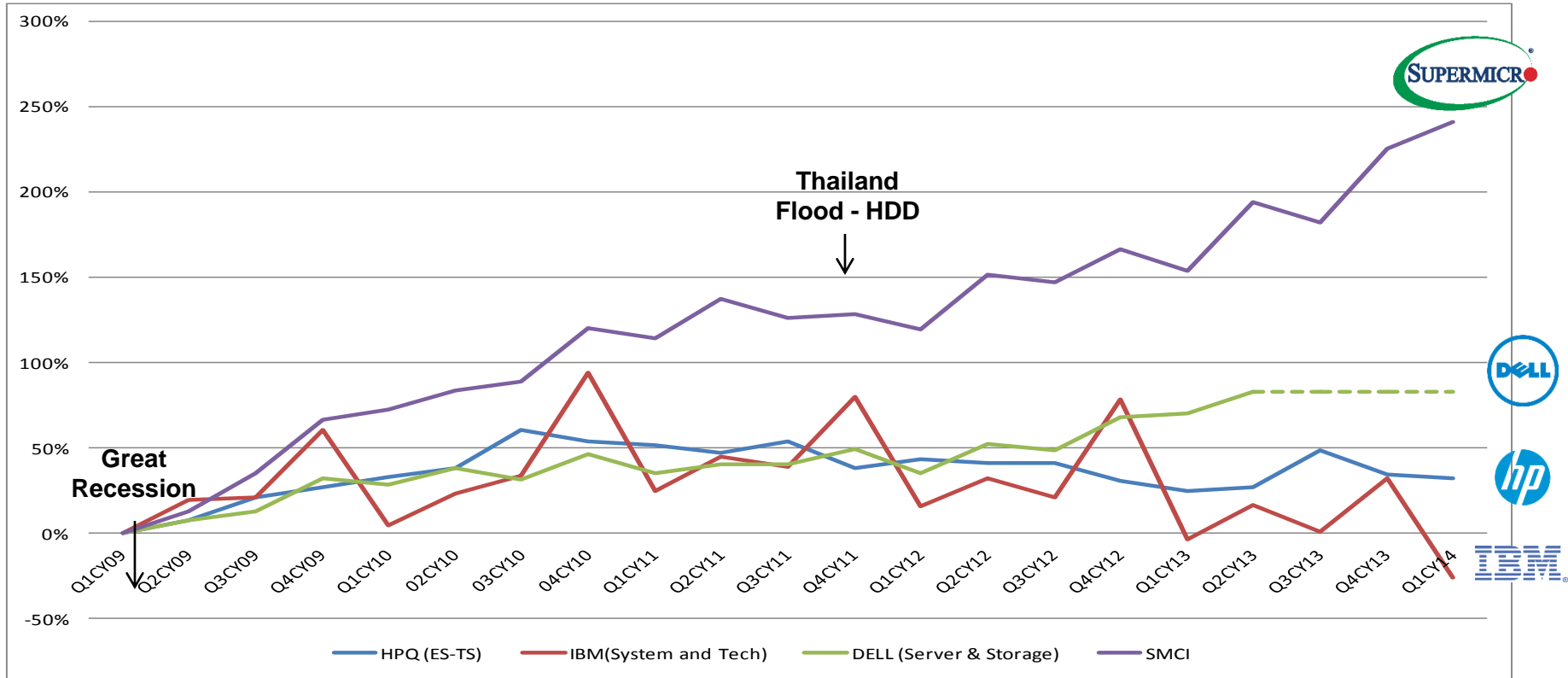


Software



Complete Rack Solutions

Supermicro: Consistent Growth Q by Q



- Since Q109 Supermicro show growth in % values in its server & storage sales



Server + Storage + Blade + Switch

15 Families – 250 SKUs

Data Center Optimized 1U



PUE optimized

Cost optimized

Twin Architecture (2 & 4 nodes)



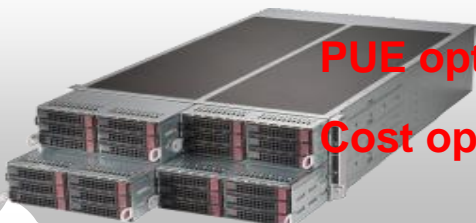
GPU Solutions



Mainstream Business Solutions



Fat Twin (4 & 8 nodes)



PUE optimized

Cost optimized

Storage Solution

1U 16x HDD Cold & 12 - 8 HDD Hot



Resource Optmzsd

(WIO/UIO)

SuperBlade

(up to 20 blades in 7U)



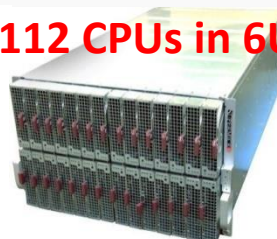
Micro Cloud

(12 nodes)



MicroBlade

(112 CPUs in 6U)



Cluster in a Box

(storage with cluster)



8-Way MP System



Workstation

Gaming



Max. I/O



Networking

1/10 Gb, 24-48-52 ports



Embedded

Thin Client

Mini ITX

Home Server



Not only Hardware: Supermicro System Management Software Suite up to a Data Center

Features	IPMICFG*	SMCIPMITool*	IPMIView*	SD5*	SPM	SUM	SCM
User Interface	CLI	CLI	GUI	WebUI CLI	GUI CLI	CLI	CLI
Management Interface	Local (In-band)	Remote (OOB)	Remote (OOB)	Local (In-band)	Remote (OOB)	Remote (OOB)	Remote (In-band)
OS Support for Manager	DOS Linux Windows	Linux Windows	Linux Windows	Linux Windows	Linux Windows	Linux	Linux
Hardware Monitoring		✓ (IPMI)	✓ (IPMI)	✓			
Power Management					✓		
Firmware Upgrades		✓ (IPMI FW)	✓ (IPMI FW)			✓ (BIOS)	✓ (BIOS & IPMI FW)
Firmware Configuration	✓ (IPMI FW)	✓ (IPMI FW)	✓ (IPMI FW)			✓ (BIOS)	
Discovery		✓	✓		✓		
Remote Power On/Off/Cycle		✓	✓	✓	✓		
Group Management		✓	✓		✓	✓ (with script)	✓
Alert Notification		✓	✓	✓	✓		

* Free Utilities

SKU	Description
SFT-DCMS-Single	Per node license for System Management Suite (all packages)
SFT-DCMS-SITE	Site license for individual software module (per year)
SFT-OOB-LIC	Per node license for OOB BIOS management mechanism
SFT-SPM-LIC	Per node license for Power Management Utility
SFT-SCM-LIC	Per node license for Command Management Utility

Node licenses: Perpetual, standard 1 year support

Only SFT-OOB-LIC license tied to hardware, the rest or tied to application



TwinPro

SuperBlade

GPU / Xeon Phi

MicroCloud

MicroBlade



Storage



Embedded



Switch

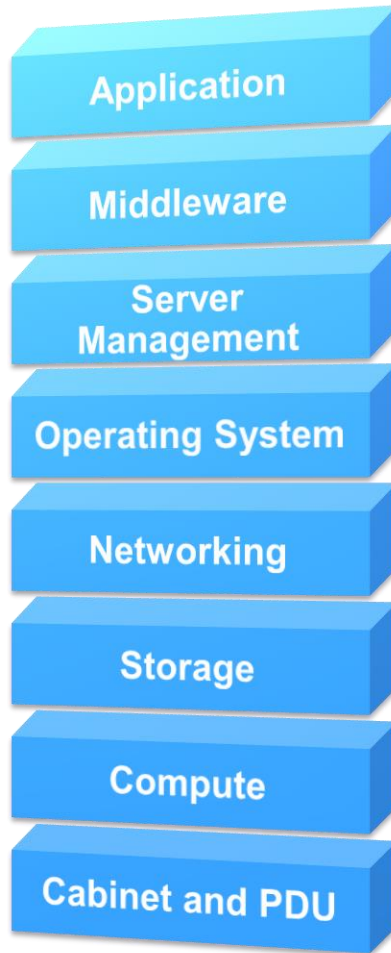
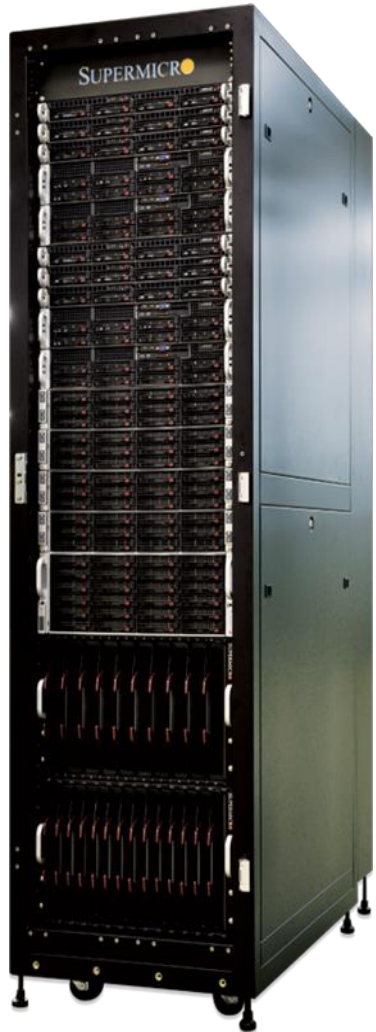


Software



Complete Rack Solutions

Partners We Work With on Rack POC Test



- ❖ **Intel** --Hadoop Benchmarking, Intel Hadoop Certification
- ❖ **Cloudera**-- Hadoop Benchmarking, CDH Certification
- ❖ **VMware**-- Rapid Desktop Program, View Based VDI Certification
- ❖ **Microsoft** – cooperation in hw development for WS Storage Server
- ❖ **Redhat**-- Redhat Storage(GlusterFS) Certification
- ❖ **Nexenta** --NexentaStor, NexentaVSA Certification
- ❖ **InkTank**-- Ceph Based Object Storage Solution Test
- ❖ **FusionIO/10Gen**– MongoDB Performance with

ioDrive



FatTwin



TwinPro



SuperBlade



GPU / Xeon Phi



MicroCloud



MicroBlade



Storage



Embedded



Switch



Software



Complete Rack Solutions

Supermicro = Total Solution (HW + SW)

1U 8x 3.5" HDD

6 GPU/Xeon Phi per node

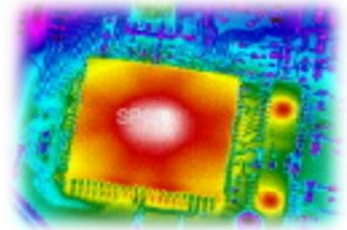


L2 1G Switch



10G Switch

High Performance Switching



Thermal Engineering

FatTwin™ Architecture



Datacenter Optimized Rackmount
(Virtualization)



96% High Efficiency
Titanium Level Power



High Capacity Storage



Blade Solutions



Datacenter Management
Software Solutions



FatTwin



TwinPro



SuperBlade



GPU / Xeon Phi



MicroCloud



MicroBlade



Storage



Embedded



Switch



Software



Complete Rack Solutions

Summary of Supermicro Value Propositions

“Super Micro Computer is proof enough of that, using its expertise in product development and innovation to stay a step ahead of [any] rivals...” investors.com



Win Together with Supermicro!

